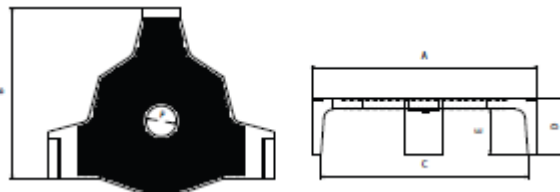
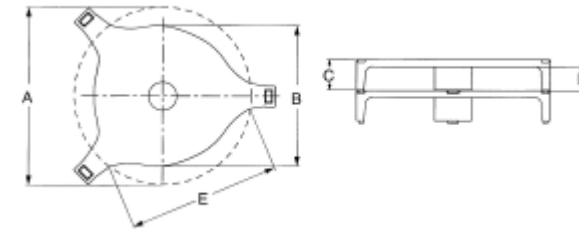


Total Foot Supports



Total Foot Supports



Description	A (mm)	B (mm)	C (mm)	D (mm)	E (mm)
TFS 19/30	190	130	39	30	160
TFS 19/40	190	130	48	40	160
TFS 21/30	210	160	40	30	180
TFS 21/40	210	160	50	40	180
TFS 23/30	230	180	40	30	205
TFS 23/35	230	180	45	35	205
TFS 23/40	230	180	50	40	205
TFS 23/45	230	180	55	45	205
TFS 26/30	260	200	41	30	230
TFS 26/40	260	200	51	40	230
TFS 26/45	260	200	56	45	230
TFS 30/30	300	235	42	30	270
TFS 30/40	300	235	52	40	270
TFS 30/45	300	235	57	45	270
TFS 35/30	350	270	44	30	315
TFS 35/40	350	270	54	40	315
TFS 35/50	350	270	64	50	315
TFS 35/60	350	270	74	60	315
TFS 38/50	385	300	67	50	340

Reference	A (mm)	B (mm)	C (mm)	D (mm)	E (mm)	F (mm)	
X11 085331	326	273	304	45	34	0	Plain
X11 085342	326	278	304	53	42	0	Plain
X11 085345	326	278	304	55	44	57	Ribbed
X11 085360	326	278	304	71	60	57	Ribbed
X11 085545	359	303	337	56	45	76	Ribbed
X11 085645	236	194	216	57	46	32	Ribbed

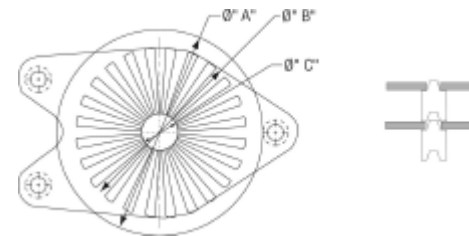
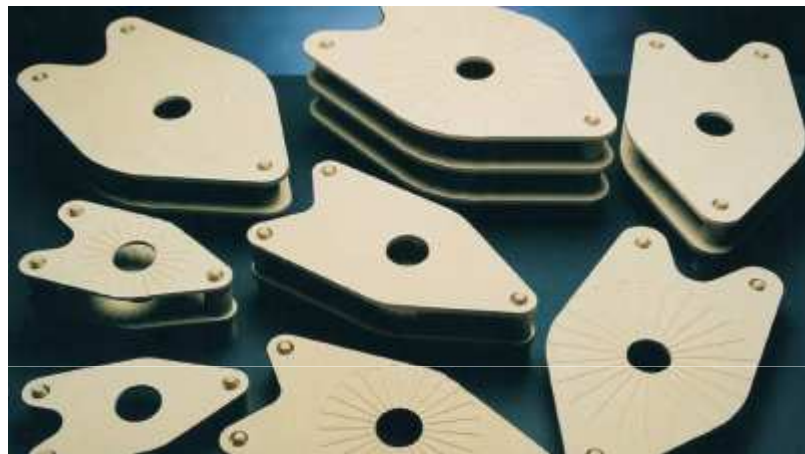
A set of spacers are available between 10 and 40mm for variable heights

IPS Ceramics LTD, Shelton New Road, Stoke-On-Trent, ST4 6EP, England
 Tel: +44 (0) 1782 – 711511 E-mail: enq@ipsceramics.com www.ipsceramics.com

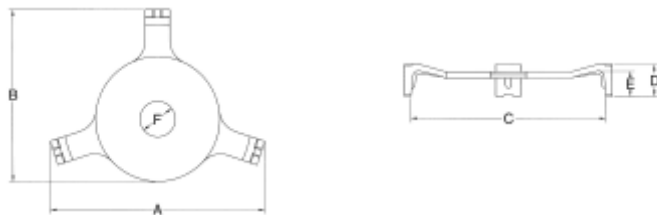
Total Foot Supports - Continued



Total Foot Supports



Leg Reference	Effective Height	Dwg Number
120/35	35mm	AMD 9398/97
120/45	45mm	AMD 9398/97
120/55	55mm	AMD 9398/97
120/65	65mm	AMD 9398/97



Product Code	A (mm)	B (mm)	C (mm)	D (mm)	E (mm)	F (mm)
X11 086458	385	310	330	58	48	80
X11 085976	346	275	295	76	66	57
X11 085950	346	275	295	48	38	57

Description	Max. Ware Dia. A (mm)	Max. Ware Dia. B (mm)	Max. Ware Dia. C (mm)	Dwg Number	Temp °C
TFS/A 19x8	190	170	50	AMD 7852/96	1200 & Below
TFS/A 19x10	190	170	50	AMD 7852/96	1200-1250
TFS/A 19x12	190	170	50	AMD 7852/96	1250-1300
TFS/A 25x10	250	230	50	AMD 8704/96	1200 & Below
TFS/A 25x12	250	230	50	AMD 8704/96	1200-1250
TFS/A 25x14	250	230	50	AMD 8704/96	1250-1300
TFS/A 29x10	290	270	50	AMD 8705/96	1200 & Below
TFS/A 29x12	290	270	50	AMD 8705/96	1200-1250
TFS/A 29x14	290	270	50	AMD 8705/96	1250-1300
TFS/A 32x12	320	300	50	AMD 10011/96	1200 & Below
TFS/A 32x14	320	300	50	AMD 10011/96	1200-1250
TFS/A 32x16	320	300	50	AMD 10011/96	1250-1300

IPS Ceramics LTD, Shelton New Road, Stoke-On-Trent, ST4 6EP, England
 Tel: +44 (0) 1782 – 711511 E-mail: enq@ipsceramics.com www.ipsceramics.com