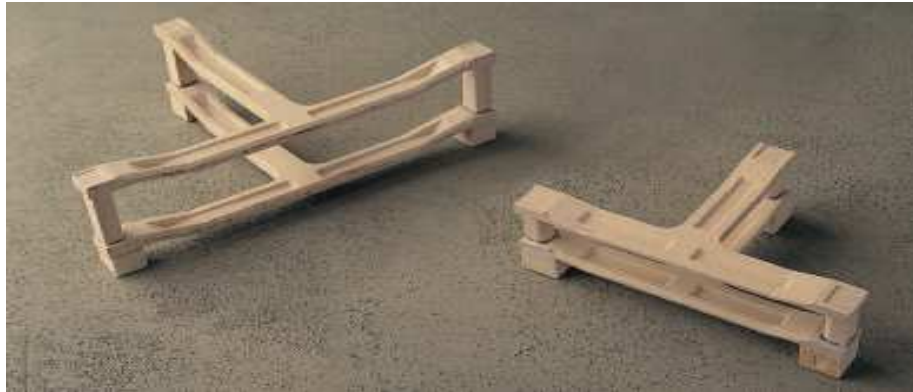


'T' Supports



'T' – Pieces and Spacer Legs



'T'-pieces have been designed to support the ware at three points around the foot during the glost firing. By use of this system, the maximum amount of support can be achieved at the cost of the minimum amount of refractory material.

'T'-pieces have been designed to be placed in bungs upon kiln cars and ware can be loaded directly into the bung without the necessity for removal. Increased placing heights between cranks can be achieved by the use of specially produced spacers.

Description	Ref.	Code	Max Ware	Foot Diameter (mm)	
			Dia. (mm)	Max	Min
Saucer Tee	TP 15N	IVS5CTCO	145	100	–
5" Standard Slot	TP 17S	IVS5TCNB	170	120	30
5" Narrow Slot	TP 17N	IVS5TCSP	170	130	30
6" Standard Slot	TP 20S	IVS6TCNB	200	140	25
7" Standard Slot	TP 23S	IVS7TCNB	230	160	40
7" Narrow Slot	TP 23N	IVS7TCSP	230	175	35
9" Standard Slot	TP 27S	IVS9TCNB	275	200	70
10" Standard Slot	TP 30S	IVS1TCNB	300	230	65
10" Narrow Slot	TP 30N	IVS1TCSP	300	200	45
Dish Tee Standard Slot	TP 39S	IVSDCONB	390	260	105
Dish Tee Narrow Slot	TP 39N	IVSDCSPG	390	260	105

Available Base Legs (25mm square)



Description	Leg Height (mm)
TPL 25	25
TPL 30	30
TPL 32	32
TPL 34	34
TPL 35	35
TPL 38	38
TPL 41	41
TPL 42	42
TPL 45	45
TPL 48	48
TPL 52	52
TPL 54	54
TPL 57	57
TPL 65	65
TPL 70	70
TPL 85	85
TPL 90	90
Base Legs	Leg Height (mm)
TPL 17	17
TPL 22	22

'T' Supports - Continued

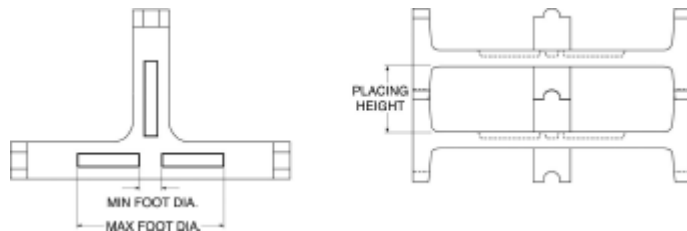


'T' – Cranks with legs



The 'T'-cranks are flat in section and have integral legs. The cranks have been designed to be placed in bungs upon the kiln cars and ware can be loaded directly into the bung without the necessity for removal. Increased placing heights between cranks can be achieved by the use of specially produced spacers.

Slots are available on the upper surface to accommodate pins to enable point contact with the ware and good air-flow across the ware to enable complete vitrification of the glaze.



	Ref	Code	Leg Type	Max. Ware Dia.	Foot Diameter		Leg Height (mm)	Placing Height (mm)
					Max	Min		
4" X553	(TC10/25)	X090553HTK	U	102	92	-	35	25
5" CCS	(TC13/25)	IVS5TCCS	H	130	95	-	36	25
5" X554	(TC14/19)	X090554HTK	U	140	105	-	29	19
5" X551	(TC14/24)	X090551HTX	H	140	102	-	35	24
5" X546	(TC16/44)	X090546HTX	H	160	150	40	54	44
5" X552	(TC16/33)	X090552HTX	U	165	114	40	44	33
7" Low	(TC18/28)	IVS7TCLO	H	180	150	-	38	28
7" Med	(TC18/33)	IVS7TCMO	H	180	150	-	43	33
7" Len	(TC18/44)	IVS7CLEN	H	180	140	45	56	44
7" Tall	(TC18/54)	IVS7TCTO	H	180	150	-	64	54
7" X557	(TC18/22)	X090557HTK	U	185	120	-	33	22
7" X547	(TC21/51)	X090547HTK	H	210	155	90	62	51
8" X558	(TC22/24)	X090558HTK	U	220	150	100	36	24
8" X542	TC21/40	X090542HTK	U	210	NO PINS		52	40
9" Flat	(TC23/25)	IVS9TCF0	H	230	150	-	34	25
9" Low	(TC23/31)	IVS9TCLO	H	230	210	-	41	31
9" Med	(TC23/44)	IVS9TCMO	H	230	215	-	54	44
9" Len	(TC23/50)	IVS7SLEN	H	230	150	55	60	50
9" X559	(TC25/27)	X090559HTK	U	250	200	120	38	27
9" 9935	(TC25/55)	IVS9935A	H	250	180	-	67	55
10" X548	(TC26/45)	X090548HTK	H	265	190	100	55	45
10" X567	(TC26/50)	X090567HTK	H	265	120	-	64	50
10" Flat	(TC28/25)	IVS1TCF0	H	280	175	-	37	25
10" Low	(TC28/32)	IVS1TCLO	H	280	175	-	44	32
10" Len	(TC28/44)	IVS1DLEN	H	280	210	95	56	44
10" Tall	(TC28/70)	IVS1TCTO	H	280	175	-	83	70
10" X560	(TC29/25)	X090560HTK	U	295	240	130	36	25
10" X566	(TC29/30)	X090566HTK	U	295	240	130	42	30
10" X543	TC26/50	X090543HTK	U	260	NO PINS		61	50
10" X544	TC26/71	X090544HTK	H	260	NO PINS		82	71
11" 9934	(TC31/40)	IVS9934A	H	310	250	-	52	40
11" X545	TC31/65	X090545HTK	H	310	NO PINS		65	53
12" X550	(TC31/44)	X090550HTK	H	310	220	120	55	44
12" X565	(TC31/62)	X090565HTK	U	310	125	90	75	62
12" 2993A	TC35/40	IVSDCS2993A	H	350	285	-	52	40
12" 9933	(TC35/80)	IVS9933A	H	350	285	-	92	80
14" X561	(TC37/66)	X090561HTK	H	375	250	140	80	66

Please note that placing heights quoted are for placing flat on the setter.

Available additions to the range:-

- Cover available for the 10" cranks & increases the stack height by 57mm.
- Distance pieces are available for the 'T'-crank range and increase the placing height by either 10mm or 20mm.

IPS Ceramics LTD, Shelton New Road, Stoke-On-Trent, ST4 6EP, England

Tel: +44 (0) 1782 – 711511 E-mail: enq@ipsceramics.com www.ipsceramics.com