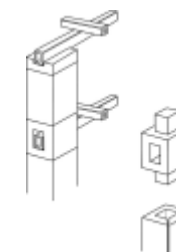


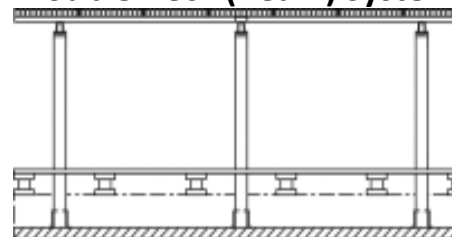
Splicer System



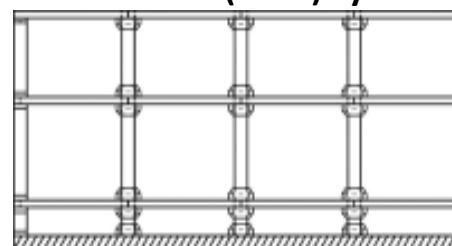
Splicer System



Double Deck (Beam) System



Multi Deck (Tube) System



Extruded supports



Note: If you require tubes not shown please contact with size required and we will quote accordingly.
Support collars for the above tubes are available on request.

Reference	Outside Dimensions (mm)	Inside Dimensions (mm)
T.7/8	22	11
T.1	25	13
T.125	32	21
T.15H	38	13
8379	40	22
T.175	44	26
T.2H	51	13
T.2	51	32
T.25	63.5	38
T.25H	63.5	28
T.3	76	51
T.3H	76	28
T.4H	102	65
T.42	102	51
T.4/60	102	60

Reference	Outside Dimensions (mm)	Inside Dimensions (mm)
R 15	36.5 x 36.5	23.5
AP 22	51 x 51	23.5
AP 25R	65 x 65	40 x 40
SQ.91	*120 x 120/91 x 91	61 x 61
SQ.91M	*120 x 120/91 x 91	50 x 50
SQ.91H	*120 x 120/91 x 91	41 x 41
SQ.80	80 x 80	35 x 35
SQ.102	102 x 102	52 x 52
SQ.125	125 x 125	52 x 52
SQ.137	137 x 137	73 x 73

Reference	Outside Dimensions (mm)	Inside Dimensions (mm)
RR.215	60 x 42	38 x 19
RR.31	83 x 38	2 holes x 19
T.2D	109 x 51	2 holes x 13
RR.41	108 x 38	2 holes x 19
RR.53	110 x 60	2 holes x 28
RR.135	135 x 65	95 x 27

* Denotes Supports with Corners off

